

# Economic Indicators for the Laramie Area



Pictured is the New Wyoming Technology Business Center at the University of Wyoming

*Wyoming Center for Business & Economic Analysis, Inc.*

Volume XII, Number 2  
September, 2009

# TABLE OF CONTENTS

FRONT MATTER	
Preface .....	ii
ECONOMIC ANALYSIS	
Economic Indicators Analysis .....	1
Data Tables .....	3
Laramie/Albany County Profile.....	9
Economic Indicator Graphs.....	11
Data Sources.....	15

## COMMUNICATIONS

Data Center Phone: (307) 632-1347  
Data Center FAX: (307) 632-1368  
Editor e-mail: [rto@wyomingeconomicdata.com](mailto:rto@wyomingeconomicdata.com)  
Web Site: [www.wyomingeconomicdata.com](http://www.wyomingeconomicdata.com)  
Mailing Address: Wyoming Center for Business &  
Economic Analysis, Inc.  
1720 Carey Ave., Suite 520  
Cheyenne, WY 82001

Editor ..... R.T. O'Gara  
Research Assistance..... Cynthia Branch  
Typography ..... Stacy Shultz-Bisset

For subscription rates, please see the last page.

The articles appearing in this publication represent the opinions of the authors and do not necessarily reflect the views of funding agencies and organizations. Duplication or quotation of material in this publication is welcomed, but it is requested that the Center be credited.

Statistics through June 2009  
Released: September 2009

## **PREFACE**

**Readers should note that the *Economic Indicators for the Laramie Area* is published twice a year. An *Annual Trends* edition is published in March of each year and then a third quarter edition is published in September of each year. This report is for the third quarter of 2009.**

# ECONOMIC INDICATORS

## ANALYSIS

### POPULATION

The U.S. Census Bureau just released updated Albany County population estimates for July 1, 2008. There was a solid gain of 1.5 percent or 470 persons from July 2007 to July 2008. The county's population stood at 32,758 as of July 2008. Most of this increase fell within the borders of the City of Laramie. The city's population increased 1.3 percent or 365 persons last year, and thus it absorbed 78 percent of the overall gain in the county's population.

Since 2000, the county's population has risen 2.3 percent or by 744 persons. Similar to 2008, the City of Laramie gained most of this increase with 460 persons residing within its borders. The current Census numbers reported that the city's population grew at a pace of 1.8 percent since 2000.

### EMPLOYMENT

Labor market statistics through June of 2009 suggested that the county and city have done remarkably well in regard to job losses in light of the national recession. However, other local economic sectors have not fared nearly as well. Job losses from second quarter 2008 were at 1 percent or 180 workers with all of the losses occurring during the second quarter of 2009. First quarter employment was actually ahead of second quarter 2008 by 106 jobs.

The number of unemployed persons did increase from second quarter 2008, up by 140 persons. Thus the county's unemployment rate moved higher and averaged 3.3 percent over the second quarter of this year. However, most cities across the nation would consider this an enviable rate.

Most worrisome was the plunge in help-wanted advertisements. This series fell 63 percent from second quarter 2008 with a weekly average of 25 ads as compared to 68 one year ago and 119 in second quarter 2007. It appears local firms are not planning on increasing staffing levels anytime soon.

Tables 1 and 4 provide additional details on the county's labor market situation.

### GENERAL BUSINESS

Unlike this time a year ago when the 3 economic indicators measuring general business conditions in the county posted positive changes, these 3 series all registered declines this time around. New and used auto registrations fell 30 percent from second quarter 2008, but on a positive note, grew

by 20 percent from first quarter 2009. This gain does not reflect the "clunker" program recently implemented by the federal government.

Enplanements were down by 23 percent from one year ago on a quarter-to-quarter basis. Through the first six months of 2009, they have averaged 606 per month as compared to 795 per month for all of 2008. If this average holds for the balance of the year, total enplanements will be approximately 7,300, a level not seen since 1991 when they finished at 6,489.

The retail sales series presented in Table 1 has been improved from past years. The series now encompasses data from 13 sub-sectors that make up the traditional retail sector. Such data was not made available until late 2008. We think the totals reported for retail sales are pretty close to actual levels. The ratio of retail sales to personal income for the U.S. economy averaged 37.8 percent over the past 5 years. With only two years of data for Albany County the comparable ratio was 31.1 percent.

For the second quarter of 2009, total retail sales were estimated at 69.7 million dollars. They were down 11.5 percent from last year's second quarter total of \$78.7 million and were down 13.8 percent from first quarter 2009. For the first half of this year, monthly retail sales averaged 25.1 million dollars as compared to 27.6 million in 2008, and thus they ran 9.1 percent behind last year's monthly levels or slightly more than 2.5 million dollars less per month.

Total retail sales were estimated at 330.1 million dollars in 2007 and 331.5 million dollars in 2008. If their current level in 2009 is continued for the balance of this year, retail sales should finish the year at 305.6 million dollars which would be an annual decline of 7.8 percent from 2008.

### CONSTRUCTION

The major distinguishing trend apparent in the construction sector thus far in 2009 was the vast level of remodeling being undertaken as compared to new construction. The total number of building permits issued soared over the first and second quarters. There were 832 permits issued in second quarter 2009 as compared to 485 from the same period in 2008. This was an increase of 72 percent. Likewise, total first quarter 2009 permits were up 31 percent from first quarter 2008.

Permits for construction of new single-family residences, on the other hand, decreased 24 percent

from second quarter 2008 and were down 32 percent from two years ago. Table 1a reported a total of 47 new single-family permits had been issued through the end of June 2009 as compared to 68 for the same period in 2008, a decrease of 31 percent. The dollar value of new residential construction, as would be expected, was also off 20 percent from this time one year ago and 27 percent from two years ago.

Somewhat surprising, new apartment construction activity remained unchanged from one year ago with 16 new apartment units permitted through the second quarter of 2009. This was identical to 2008's pace for the same comparable time.

Rental prices for two bedroom apartments averaged \$597 by fourth quarter 2008 which was a 5.1 percent increase over fourth quarter 2007. Rental prices for a home averaged \$870 per month during the fourth quarter of last year which was an increase of 3.9 percent from a year earlier. While rental prices have remained firm over the past year, the number of vacancies jumped sharply by second quarter 2009. There were 314 apartment vacancies as compared to 103 from the comparable period in 2008. The reported vacancy rate was 10.5 percent as compared to 4.3 percent during second quarter 2008. These increases can be attributed to the overall slowdown in the local economy and to the large increase in new apartment units (136) constructed over the past few years.

There was no new commercial construction for the first five months of 2009 and one new permit issued in June 2009 valued at \$900,000. Thus far in 2009, the monthly dollar value of commercial construction has averaged \$149,800 as compared to \$2.8 million per month in 2008.

## FINANCIAL ACTIVITY

Given the decline in retail sales reported above, it would be expected that sales tax revenues flowing to Albany County governmental entities would also decrease in 2009 and that was the case. Table 2 presents four sales tax indicators and all registered declines from one year ago. The first three series posted approximate 11 percent declines from second quarter 2008 and about 5.5 percent declines from second quarter 2007. These three were down quite sharply from first quarter 2009 with an average decrease of 25 percent.

Probably the most revealing of the three above indicators would be total tax receipts which are composed of both 4% and 1% Sales taxes and represent the actual dollars flowing to local governments within the county. On a monthly basis, these dollars flowed at an average rate of \$848,249 per month over the first half of 2009. In 2008, the comparable average was \$875,221, thus 2009's average is 3.1 percent less. It would thus appear that

second quarter's percentage decreases reported in Table 2 overstate the potential loss in sales tax revenues with the former reflecting more seasonal variation than actual variation. If the losses continue for the balance of 2009 at the current rate, local governments will have approximately \$323,664 less in sales tax receipts available for spending.

The tax revenues from the 4% Lodging Tax, however, were down significantly from this point one year ago. Thus far in 2009, the monthly average has been \$38,725 as compared to \$56,615 for all of 2008, a decrease of 32 percent. The tourist season had yet to hit its peak months at the time of this report, so there is a strong probability that this reported decline will be mitigated, if not entirely erased, by year's end.

Financial statistics from local credit unions through the second quarter demonstrated generally healthy results. Loans and deposits posted 10.7 percent and 12.5 percent gains respectively from second quarter 2008. Year-to-date income was down 37 percent from this point a year ago but this decline was due to a massive premium assessment levied on local credit unions by their corporate credit union system during first quarter 2009. These assessments were used to keep the corporate system from financial failure due to its 64 billion dollar holdings of mortgage and asset-backed securities. The latter had accumulated huge unrealized losses during the financial meltdown in late 2008. These unrealized losses threatened the liquidity of the corporate credit union system. Expect net income to rebound by the end of the year.

## UTILITIES

All utility indicators had small but positive gains from second quarter 2009 as compared to second quarter 2008. Even better, most had larger increases from two years ago. Looking back to 2000, residential electric hook-ups were 14.4 percent higher by the end of second quarter 2009 than they were back in 2000. There are now 1,722 more hook-ups which provide some guidance as to long-term growth for the City of Laramie. This series has grown, on average, at an annual rate 1.6 percent over the past 8.5 years. Residential gas hook-ups sported an almost identical growth rate (1.7%). From earlier in this report, the city's population had grown at a 1.8 percent rate since 2000.

Commercial electric hook-ups grew at a rate of 2.1 percent over the same comparable period just mentioned above. There were 362 more hook-ups in 2009 than reported in 2000. Industrial electrical hook-ups did not do as well. They were down 23 percent or 6 for the period.

Overall, these utility series suggest real economic growth for Albany County has continued in the range of 1.6 percent to 2.1 percent since the start of this decade.

**TABLE 1**

	A 2Q07	B 2Q08	C 1Q09	D 2Q09	PERCENTAGE CHANGE A TO D	PERCENTAGE CHANGE B TO D	PERCENTAGE CHANGE C TO D
<b>EMPLOYMENT</b>							
Total Civilian Labor Force (LAUS)	18,582	18,792	19,032	18,754	0.92	-0.21	-1.46
Total Employment (LAUS)	18,111	18,324	18,430	18,144	0.18	-0.98	-1.55
Total Unemployment (LAUS)	471	469	602	609	29.28	30.01	1.16
Unemployment Rate (LAUS)	2.5%	2.5%	3.2%	3.3%	28.73	30.83	3.18
Initial Unemployment Claims	14	16	26	29	104.65	87.23	14.29
Help Wanted Ads	119	68	28	25	-78.82	-63.19	-10.32
<b>GENERAL BUSINESS ACTIVITY</b>							
Auto Registrations New & Used	191	200	117	140	-26.40	-29.83	19.94
Enplanements - Laramie Regional Airport	775	802	592	619	-20.09	-22.78	4.62
Total Retail Sales (\$000)	71,729	78,721	80,890	69,705	-2.82	-11.45	-13.83
<b>CONSTRUCTION</b>							
Single Fam Bldg Permits - Laramie	38	34	12	26	-31.58	-23.53	116.67
Total Bldg Permits - (Laramie) (a)	142	162	139	277	94.85	71.55	99.52
Rural Bldg Permits	17	13	6	13	-25.49	0.00	111.11
Value of Authorized Construction (\$000)	6,405	4,638	2,741	6,743	5.27	45.37	145.97
Residential (\$000)	1,909	1,754	520	1,397	-26.81	-20.36	168.65
Total Business Construction (\$000)	2,078	326	0	300	-85.58	-8.01	N/A

(a) Data includes building and non-building.

N/A = Not applicable

Note: Retail Sales (\$000) are a total of figures for three months. All other figures reported under Employment and General Business Activity are the monthly average for the quarter. Single Family Building Permits are a total of the figures for three months. All other construction figures are the monthly average for the quarter.

**TABLE 1A**

<b>Housing Profile Albany County 2008 Authorized Construction by Permit</b>					
MONTH	SFU	DUPLEX UNITS	TRI & FOUR PLEX	MULTI- FAMILY	TOTAL UNITS
January	4	0	0	0	4
February	4	0	0	0	4
March	10	0	0	12	22
April	20	0	4	0	24
May	12	0	0	0	12
June	18	0	0	0	18
July	26	0	0	0	26
August	22	0	4	0	26
September	6	0	6	0	12
October	4	0	4	0	8
November	5	0	0	0	5
December	1	0	0	0	1
Year to Date	132	0	18	12	162

<b>Housing Profile Albany County 2009 Authorized Construction by Permit</b>					
MONTH	SFU	DUPLEX UNITS	TRI & FOUR PLEX	MULTI- FAMILY	TOTAL UNITS
January	3	0	0	0	3
February	6	0	0	0	6
March	7	0	0	0	7
April	12	0	0	12	24
May	6	0	4	0	10
June	13	0	0	0	13
July					0
August					0
September					0
October					0
November					0
December					0
Year to Date	47	0	4	12	63

**TABLE 2**

	A 2Q07	B 2Q08	C 1Q09	D 2Q09	PERCENTAGE CHANGE A TO D	PERCENTAGE CHANGE B TO D	PERCENTAGE CHANGE C TO D
<b>FINANCIAL ACTIVITY (a)</b>							
Total Tax Collections (\$000)	6,642	7,077	7,282	6,278	-5.48	-11.30	-13.79
Actual Receipts to County Entities (\$000) (b)	2,309	2,450	2,915	2,175	-5.82	-11.24	-25.38
Total 1% Sales & Use Tax Distributions (\$000)	1,074	1,141	1,566	1,011	-5.84	-11.36	-35.42
Total Lodging Tax Distributions (\$)	112,886	135,524	100,645	131,708	16.67	-2.82	30.86
<b>CREDIT UNION DATA</b>							
Deposits (\$000)	164,135	187,927	205,579	211,355	28.77	12.47	2.81
Total Loans (\$000)	102,528	114,838	124,476	127,118	23.98	10.69	2.12
Net Income Y-T-D (\$)	657,333	833,043	456,932	528,732	-19.56	-36.53	15.71
Delinquencies (\$)	495,516	911,221	1,480,708	1,246,779	151.61	36.83	-15.80
Memberships	23,080	23,338	21,989	21,906	-5.09	-6.14	-0.38

(a) All Series are reported as quarterly totals

(b) This total includes the 4% Sales and 4% Use Tax, the 1% Sales and 1% Use Tax, the Out of State Use Tax, and the Out of State Sales Tax. As of July 1, 1993, the state sales and use tax levy was changed from 3% to 4%. The percentage of these revenues distributed to municipalities change over time and presently it is 29.5%.

**TABLE 3**

	A 2Q07	B 2Q08	C 1Q09	D 2Q09	PERCENTAGE CHANGE A TO D	PERCENTAGE CHANGE B TO D	PERCENTAGE CHANGE C TO D
<b>UTILITIES</b>							
Residential Electric Hookups - Active Meters	13,262	13,470	13,633	13,625	2.74	1.15	-0.06
Commercial Electric Hookups - Active Meters	2,164	2,224	2,239	2,242	3.59	0.79	0.12
Industrial Electric Hookups - Active Meters	21	21	21	21	0.00	0.00	0.00
Residential Gas Hookups - Active Meters	9,942	10,106	10,177	10,177	2.36	0.70	0.00
Commercial Gas Hookups - Active Meters	1,100	1,157	1,174	1,174	6.73	1.47	0.00
Metered Taps - Water (a)	N/A	8,559	8,654	8,693	N/A	1.57	0.45
<b>EDUCATION</b>							
School Enrollments							
District #1	3,426	3,473	3,498	3,498	0.72	0.72	0.00
Private Schools	71	93	67	67	-5.63	-27.96	0.00
Home School	124	129	104	104	-16.13	-19.38	0.00
Average Total School Enrollment	3,497	3,674	3,669	3,669	4.92	-0.14	0.00
University of Wyoming (Headcount) (b)	2,984	2,960	8,484	2,993	0.30	1.11	-64.72
University of Wyoming (FTE) (b)	1,087	1,082	9,250	1,914	76.11	76.92	-79.30
LCCC - Albany Co. Campus (FTE) (b)	74	69	633	70	-5.64	1.20	-88.96
LCCC - Albany Co. Campus (Headcount)	195	241	1,090	226	15.90	-6.22	-79.27
Wyoming Technical Institute	1,353	863	1,066	777	-42.55	-9.93	-27.08

Note: Figures reported are an average for the three months.

N/A indicates the information was not available.

(a) Metered water taps are billed quarterly. Figures reported are total number of taps billed per quarter.

(b) University of Wyoming figures are for the main campus only.

**TABLE 4**

	JAN	FEB	MAR	APR	MAY	JUN	JUL	AUG	SEP	OCT	NOV	DEC	AVG	YEAR
<b>EMPLOYMENT</b>														
Total Civilian Labor Force	18,013	18,908	19,248	19,049	18,916	18,412	17,987	17,698	19,101	19,535	19,292	19,553	18,809	2008
	18,476	19,267	19,353	19,169	19,069	18,023							18,893	2009
Total Employment	17,433	18,414	18,731	18,637	18,437	17,897	17,523	17,179	18,709	19,103	18,846	19,037	18,329	2008
	17,865	18,712	18,712	18,675	18,489	17,269							18,287	2009
Total Unemployment	580	494	517	412	479	515	464	519	392	432	446	516	481	2008
	611	555	641	494	580	754							606	2009
Unemployment Rate	3.2%	2.6%	2.7%	2.2%	2.5%	2.8%	2.6%	2.9%	2.1%	2.2%	2.3%	2.6%	2.6%	2008
	3.3%	2.9%	3.3%	2.6%	3.0%	4.2%							3.2%	2009
Initial Unemployment Claims	29	11	15	21	9	17	13	8	20	11	22	27	17	2008
	31	24	22	43	14	31							28	2009
Help Wanted Ads	73	61	69	59	74	72	77	78	65	55	44	34	63	2008
	30	24	31	25	32	20							27	2009
<b>GENERAL BUSINESS ACTIVITY</b>														
New Car & Truck Sales	179	157	174	189	209	202	231	195	208	166	107	104	177	2008
	124	100	127	123	119	179							129	2009
Enplanements Laramie Reg. Airport	753	828	955	798	809	799	770	759	770	784	703	797	794	2008
	515	610	651	623	618	617							606	2009
Retail Sales (\$000)	25,613	26,840	23,683	24,698	26,457	27,566	28,612	32,082	34,063	34,852	22,223	24,781	27,622	2008
	26,675	27,947	26,268	21,904	22,495	25,306							25,099	2009

Table 5

	JAN	FEB	MAR	APR	MAY	JUN	JUL	AUG	SEP	OCT	NOV	DEC	AVG	YEAR
<b>CONSTRUCTION</b>														
Total Building Permits - Albany County	109	89	120	146	143	196	347	337	443	410	141	84	214	2008
	134	107	176	270	270	292							208	2009
Sing. Fam. Bldg. Perm. - Laramie	4	2	9	17	6	11	15	12	3	2	4	1	7	2008
	2	4	6	10	6	10							6	2009
Rural Bldg. Perm. - Albany County	2	5	6	9	18	11	16	18	12	8	3	3	9	2008
	4	6	8	18	8	12							9	2009
Value of Authorized Construction	31,146,554	41,639,923	6,349,906	5,494,274	3,173,781	5,247,250	10,022,363	4,430,018	50,216,836	6,308,127	5,842,428	3,553,116	14,452,048	2008
	3,240,145	2,710,248	2,273,581	4,684,262	3,989,177	11,554,708							4,742,020	2009
Business Construction	25,938,460	0	2,299,800	712,260	265,000	0	0	234,707	216,804	1,520,000	0	2,584,948	2,814,332	2008
	0	0	0	0	0	899,000							149,833	2009
Residential Construction	915,164	182,960	1,594,924	3,095,636	714,956	1,452,672	1,932,811	1,394,076	638,450	704,700	510,515	284,500	1,118,447	2008
	464,000	437,960	658,400	1,305,876	997,999	1,888,025							958,710	2009
<b>UTILITIES</b>														
Power Sales Commercial Active Meters	2,219	2,217	2,214	2,219	2,222	2,231	2,239	2,246	2,248	2,245	2,249	2,243	2,233	2008
	2,240	2,238	2,239	2,239	2,239	2,247							2,240	2009
Gas Consumption Residential Active Meters	10,106	10,106	10,106	10,106	10,106	10,106	10,106	10,106	10,106	10,106	10,106	10,106	10,106	2008
	10,177	10,177	10,177	10,177	10,177	10,177							10,177	2009
<b>TAXES</b>														
Total Sales and Use Tax Collections	2,385,929	2,591,215	2,150,355	2,151,459	2,396,391	2,529,404	2,490,684	2,898,200	3,283,793	3,268,090	2,054,529	2,368,400	2,547,371	2008
	2,303,996	2,660,345	2,317,433	2,014,883	1,998,710	2,264,176							2,259,924	2009
Wholesale and Retail - Sales and Use Tax Collections	1,259,524	1,300,929	1,132,686	1,083,329	1,232,785	1,154,310	1,207,875	1,441,896	1,666,230	1,623,096	863,093	1,113,604	1,256,613	2008
	1,222,862	1,477,441	1,222,737	992,134	1,003,823	1,127,832							1,174,472	2009
1% Sales and Use Tax Receipts	387,483	418,950	349,207	345,679	386,562	408,825	398,151	432,120	527,851	522,251	326,646	380,785	407,042	2008
	372,206	818,277	375,822	325,156	322,572	363,742							429,629	2009
Lodging Tax Receipts	31,192	44,186	28,183	49,105	40,506	45,914	68,919	86,272	76,341	95,809	66,547	46,403	56,615	2008
	38,720	29,066	32,859	39,563	37,246	54,899							38,725	2009

## LARAMIE/ALBANY COUNTY PROFILE 2009

ITEMS	MOST RECENT PERIOD		PREVIOUS PERIOD		% CHANGE IN VALUE
	YEAR	VALUE	YEAR	VALUE	
<b>Demography</b>					
Total Population - Laramie <sup>1</sup>	2008	27,664	2007	27,299	1.3%
Total Population - Albany County	2008	32,758	2007	32,288	1.5%
Total Male Population	2008	17,198	2007	16,915	1.7%
Total Female Population	2008	15,560	2007	15,312	1.6%
Population - Under 18 Years Old	2008	6,159	2007	5,870	4.9%
Population - 65 Years & Older	2008	2,784	2007	2,728	2.1%
Median Age	2007	26.9	2006	26.7	0.7%
% of Population - White Alone (Non-Hispanic)	2008	93.7%	2007	93.1%	0.6%
% of Population - Native American Alone	2008	1.1%	2007	1.2%	-8.3%
% of Population - Hispanic or Latino	2008	7.9%	2007	7.7%	2.6%
% of Households (HH) Headed by Married Couples	2000	42.0%	1990	46.2%	-9.1%
% of HH Headed by Single Female (w/own children <18 yrs.)	2000	7.5%	1990	8.0%	-6.3%
<b>Weather &amp; Geography</b>					
Total Area (sq. miles) <sup>1</sup>	2000	4,273	-	-	
Water Area (sq. miles)	2000	36	-	-	
Mean Elevation (ft.)	2000	7,163	-	-	
Normal Mean Temperature (F) - Laramie <sup>2</sup>	1966-2007	40.4	1971-2000	40.3	0.2%
Average Annual Precipitation (inches) - Laramie <sup>2</sup>	1966-2007	10.7	1971-2000	11.7	-8.8%
Average Wind Speed (mph)	1996-2006	12.4	1992-2002	12.2	1.6%
<b>Crime &amp; Law Enforcement</b>					
Crimes <sup>3</sup>	2008	1,060	2007	1,056	0.4%
Crimes per 100,000 Persons	2008	3,425	2007	3,471	-1.3%
Murders per 100,000 Persons	2008	3.2	2007	0.0	n/a
Rapes per 100,000 Persons	2008	16.2	2007	3.0	438.5%
Robberies per 100,000 Persons	2008	6.5	2007	15.2	-57.5%
Aggravated Assaults per 100,000 Persons	2008	84.0	2007	51.7	62.5%
Burglaries per 100,000 Persons	2008	433.0	2007	292.1	48.2%
Larcenies & Thefts per 100,000 Persons	2008	2,720.5	2007	2637.9	3.1%
Motor Vehicle Thefts per 100,000 Persons	2008	161.6	2007	213.0	-24.2%
<b>Education</b>					
% of Pop. (25 yrs. & older) with High School Degree	2000	93.5%	1990	89.3%	4.7%
% of Pop. (25 yrs. & older) with Bachelor's Degree	2000	44.1%	1990	38.5%	14.5%
ACT Average Composite Score (range 1-36)	2007-2008	22.9	2006-07	22.6	1.3%
Spring Semester Enrollment Albany County School District	2009	3,498	2008	3,473	0.7%
Pupil -Teacher Ratio in Public Schools <sup>4</sup>	2006-2007	11.61	2005-06	11.09	4.7%
Public High School Graduation Rate <sup>5</sup>	2006-2007	85.4%	2005-06	84.0%	1.6%

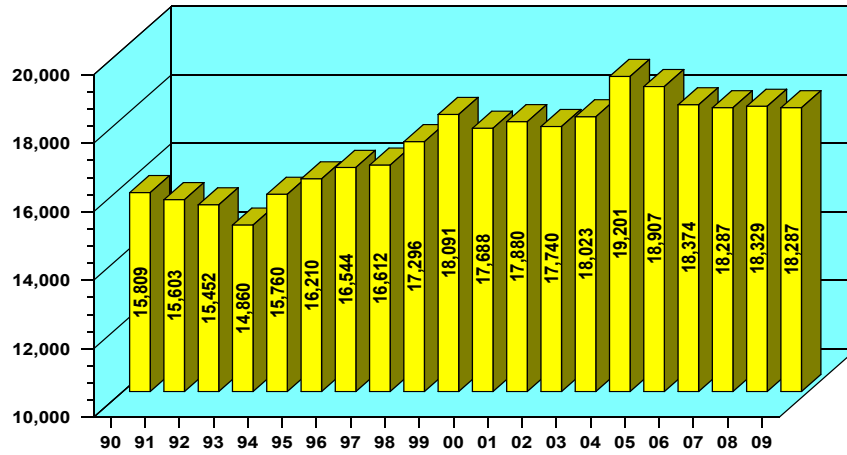
Expenditures per Pupil in Public Schools (\$)	2006-2007	\$11,268	2005-06	\$10,258	9.8%
Total School Enrollments Spring Semester	2009	3,669	2008	3,674	-0.1%
% of Students in Private Schools	2009	1.8%	2008	2.5%	-28.0%
% of Students Home-Schooled	2009	2.8%	2008	3.5%	-20.0%
Spring Semester Full-Time Equivalent (FTE) Enrollment at the University of Wyoming <sup>6</sup>	2009	9,250	2008	8,300	11.4%
Average Student Age at UW (Spring Semester)	2009	28	2008	28	0.0%
4 - Year Graduation Rate at UW	2002	22.9%	2001	26.2%	-12.6%
Average Faculty Salary at UW (in thousands)	2008-2009	\$76.2	2007-08	\$72.2	5.5%
Spring Semester Full-time Equivalent (FTE) Enrollment at Laramie County Community College (Albany County Campus) <sup>7</sup>	2009	633	2008	604	4.8%
<b>Housing</b>					
Average Rent for 2-3 Bedroom House (\$) <sup>8</sup>	4Q08	\$870	4Q07	\$837	3.9%
Average Rent for 2 Bedroom Apartment (\$)	4Q08	\$597	4Q07	\$568	5.1%
Average Rent for 2-3 Bedroom Mobile Home (\$)	4Q08	\$599	4Q07	\$523	14.5%
Rental Vacancy Rate <sup>12</sup>	2Q09	10.50%	2Q08	4.30%	144.2%
<b>Albany County's Economy</b>					
Median Household Income <sup>11</sup>	2007	\$42,118	2005	\$34,901	20.7%
Per Capita Personal Income (\$) <sup>9</sup>	2007	\$34,983	2006	\$31,740	10.2%
<b>Employment &amp; Labor</b>					
Average Annual Pay (\$) <sup>10</sup>	2008	33,891	2007	32,354	4.8%
Total Non-farm Jobs <sup>9</sup>	2007	21,032	2006	20,618	2.0%
% of Jobs in Mining	2007	0.2%	2006	n/a	n/a
% of Jobs in Government	2007	35.8%	2006	36.1%	-1.0%
% of Jobs in Construction	2007	6.0%	2006	5.6%	7.7%
% of Jobs in Manufacturing	2007	3.0%	2006	3.3%	-10.0%
% of Jobs in Leisure & Hospitality	2007	10.2%	2006	10.2%	0.0%
% of Jobs in Professional & Business Services	2007	6.7%	2006	6.6%	0.3%

Sources:

- <sup>1</sup> U.S. Census Bureau
- <sup>2</sup> Western Regional Climate Center
- <sup>3</sup> Wyoming Division of Criminal Investigation
- <sup>4</sup> Albany County School District
- <sup>5</sup> Wyoming Department of Education
- <sup>6</sup> Office of Institutional Analysis, University of Wyoming
- <sup>7</sup> Laramie County Community College
- <sup>8</sup> State of Wyoming, Dept. of Admin. & Info., Economic Analysis Division
- <sup>9</sup> U.S. Commerce Department, Bureau of Economic Analysis
- <sup>10</sup> U.S. Department of Labor, Bureau of Labor Statistics
- <sup>11</sup> US Census Bureau - Small Area Income & Poverty Estimates
- <sup>12</sup> Wyoming Housing Database Partnership

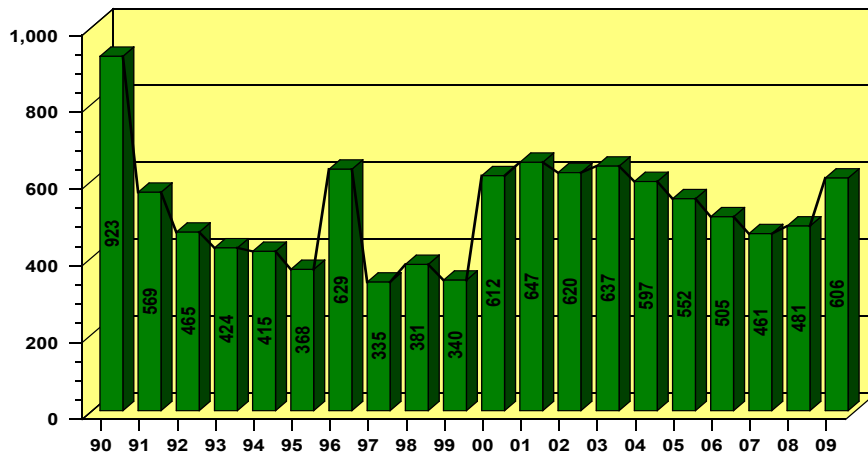
### EMPLOYMENT, ALBANY COUNTY

MONTHLY AVERAGE  
1990 - 2009



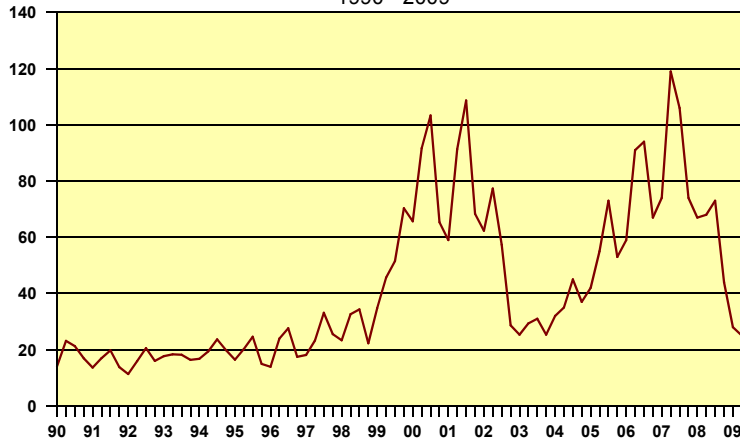
### UNEMPLOYMENT, ALBANY COUNTY

MONTHLY AVERAGE  
1990 - 2009



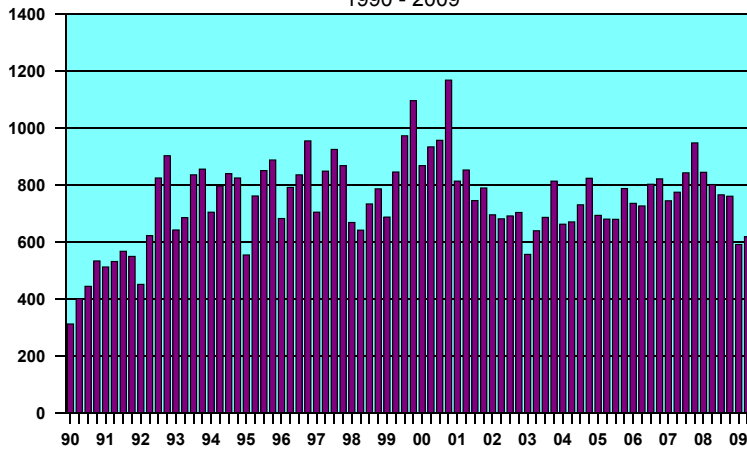
### HELP - WANTED ADS, LARAMIE

QUARTERLY AVERAGES  
1990 - 2009



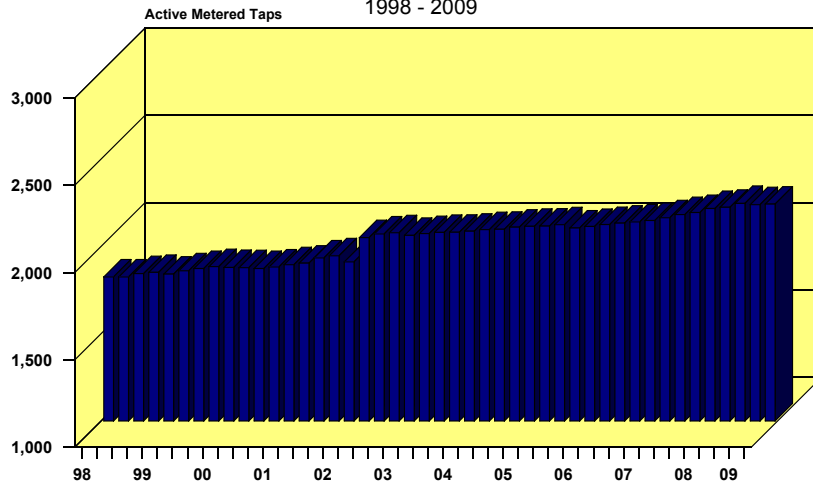
**ENPLANEMENTS, LARAMIE AIRPORT**

QUARTERLY AVERAGE  
1990 - 2009



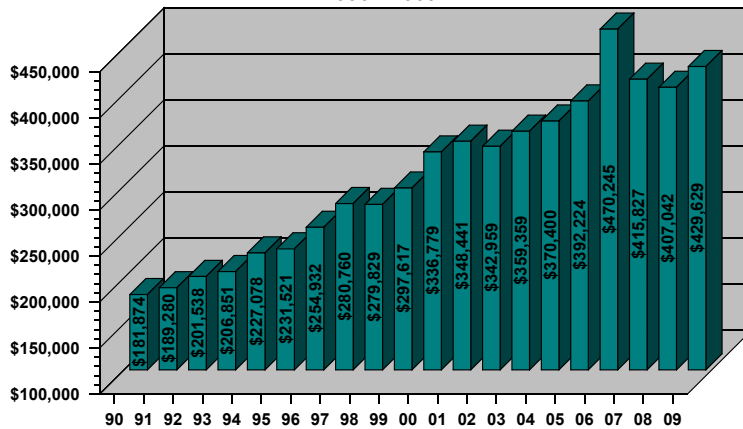
**COMMERCIAL ELECTRIC POWER, LARAMIE**

QUARTERLY AVERAGES  
1998 - 2009



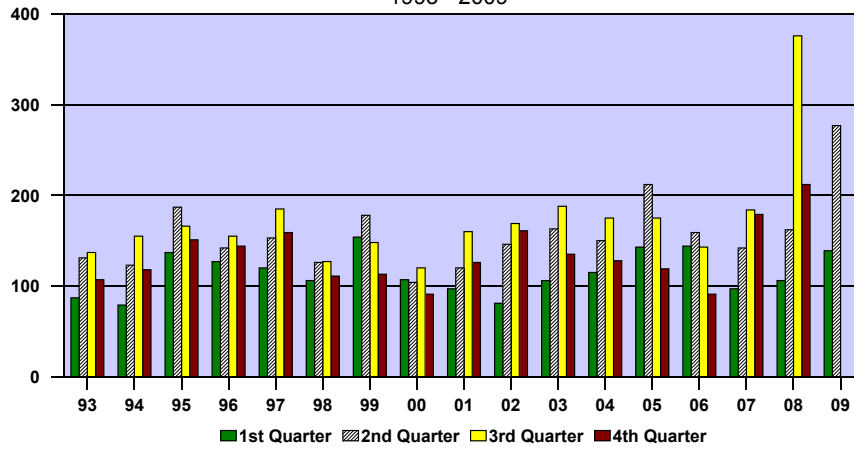
**1% OPTIONAL SALES AND USE TAX DISTRIBUTIONS**

ALBANY COUNTY  
MONTHLY AVERAGE  
1990 - 2009



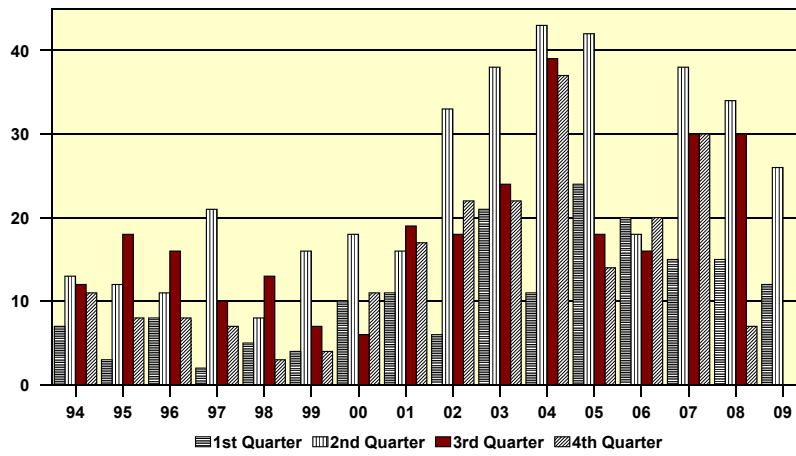
### TOTAL BUILDING PERMITS, LARAMIE

QUARTERLY AVERAGES  
1993 - 2009



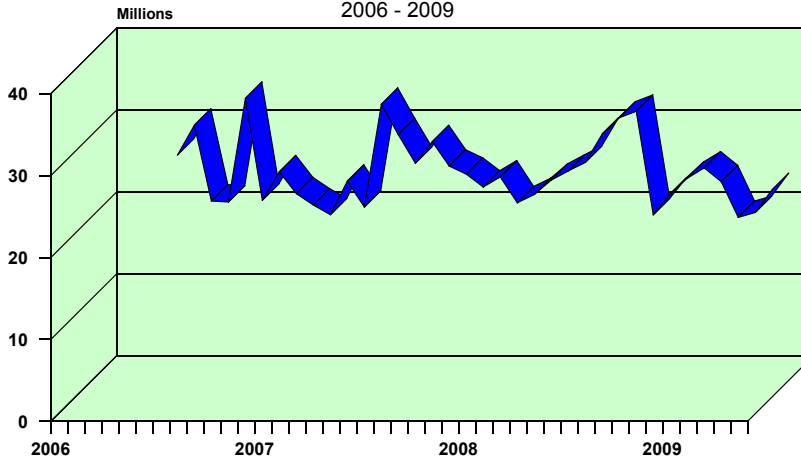
### SINGLE-FAMILY BUILDING PERMITS, LARAMIE

QUARTERLY TOTALS  
1994 - 2009



### RETAIL SALES, ALBANY COUNTY

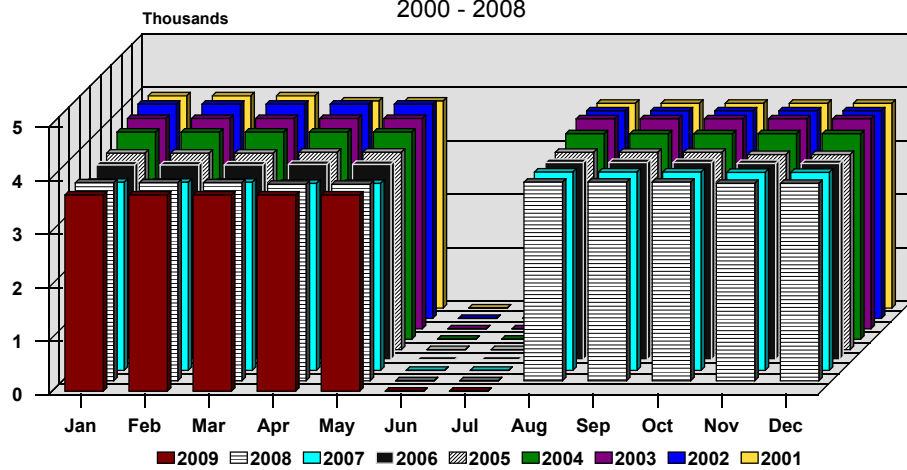
MONTHLY TOTALS  
2006 - 2009



# ALBANY COUNTY SCHOOLS, TOTAL ENROLLMENT

## MONTHLY TOTALS

2000 - 2008



## DATA SOURCES

1. Automobile Registrations:  
Albany County Clerk
  2. Construction, Permits, Valuation, Residential:  
Laramie City Engineering Department
  3. Employment:  
Wyoming Department of Employment
  4. Help-Wanted Index:  
Wyoming Center for Business & Economic Analysis, Inc.
  5. Sales and Use Tax Collections:  
Wyoming Department of Revenue and Taxation  
Department of Administration & Information
  6. Utilities:  
Electrical - Pacific Power  
Natural Gas - Source Gas
  7. Water Usage - Metered Taps:  
Laramie City Building Department
  8. Enplanements:  
Laramie Regional Airport
  9. Educational Data:  
Albany County School District #1  
St. Laurence Private School  
University Of Wyoming  
Laramie County Community College  
Wyoming Technical Institute
  10. Rural Building Permits:  
Albany County Planning Office
- 

## SPONSORS

We wish to acknowledge financial support from the following:

City of Laramie  
Laramie Economic Development Corporation  
Laramie Area Chamber of Commerce  
1st Interstate Bank of Laramie  
1st National Bank of Laramie