

Economic Indicators for the Laramie Area

Center for Economic and Business Data

Volume VI, Number 4
December, 2003

TABLE OF CONTENTS

FRONT MATTER
Preface ii

ECONOMIC ANALYSIS
Economic Indicators Analysis 1
Data Tables 3
Laramie/Albany County Profile 8
Economic Indicator Graphs 9
Data Sources inside back cover

COMMUNICATIONS

Data Center Phone: 307-778-1325
Data Center FAX: 307-778-4309
Editor e-mail: dogara@lccc.wy.edu
Mailing Address: Center for Economic and Business Data
1400 East College Drive
Cheyenne, WY 82007
or: Albany County Campus
710 Garfield, Room 209
Laramie, WY 82070
721-5138

Editor R.T. O'Gara
Editorial Assistance Dava Brown
Research Assistance Michelle Trufant
Typography Stacy L. Shultz-Bisset
Printing LCCC Campus Printing

The articles appearing in this publication represent the opinions of the authors and do not necessarily reflect the views of Laramie County Community College or its respective executive officers. Duplication or quotation of material in this publication is welcomed, but it is requested that the Center be credited.

ECONOMIC INDICATORS

ANALYSIS

Once again, the primary measures of the local labor market registered small declines over the third quarter of 2003, and as reported in the last issue of the *Economic Indicators for Albany County*, these declines can be attributed to administrative recordkeeping changes initiated by the Wyoming Department of Employment in late 2002. Therefore, the decreases of approximately 1 percent in the local labor force and employment series presented in Table 1 are not indicative of the level of local economic activity. Other economic indicators suggest business activity in Albany County did well during the most recent quarter.

Help-wanted advertisements increased 7 percent from the second quarter of 2003. The unemployment rate was unchanged from last quarter — 1.7 percent as compared to 1.6 percent.

New and used automobile registrations did very well, up 31 percent from third quarter 2002 and 14 percent for second quarter 2003. The most encouraging indicator this quarter was estimated retail sales, which grew 15 percent from this time last year and rose 27 percent from last quarter. This series is reported as “Total Taxable Sales” in Table 1. Even enplanements, a series that has reported large, steady declines for the past two years, declined only fractionally this quarter, off by 0.7 percent. It also increased 7 percent from the second quarter of 2003. Hopefully, these are signs that local commercial air traffic is beginning to flutter positively.

While growth in the construction sector was very strong during the second quarter of this year, third quarter growth remained at a comparable torrid pace. Almost all series increased to higher levels than those reported during the second quarter. For example, single-family home construction grew 6 percent over second quarter 2003 and was up 89 percent from third quarter 2002. Total building permits

in the city increased 15 percent and 11 percent respectively over the same comparable time periods. Rural residential permits did drop from second quarter, but were still ahead of last year’s pace by 33 percent.

The dollar value of all construction in the city increased 74 percent from last quarter and was up 56 percent from one year ago. These increases were due to a new recreation center and a large remodeling contract on the university campus. When combined, the dollar value of these two projects exceeded \$15 million. The value of residential construction increased 59 percent from third quarter 2002. Another very positive sign was the 7 percent increase in commercial and industrial construction valuation. It increased 7 percent from one year ago and averaged \$3.3 million per month over this quarter. There had been no new commercial construction during the first five months of 2003.

Measures of local government fiscal health did well again this quarter. Total tax collections increased 16 percent from one year ago. Total tax receipts to all county governmental entities also posted a 15 percent increase over the same period. Most impressive was the surge in revenues from the 3 percent lodging tax. This series registered a 33 percent gain from third quarter 2002, which suggests the local economy had a strong tourist season.

Local primary and secondary public school enrollments declined marginally, off 0.7 percent from fall of 2002. Private school enrollments, however, increased 12 percent from last year. Home schooling numbers were unchanged over the same period.

University of Wyoming full-time equivalent enrollment on the Albany County campus only increased 0.4 percent this fall. Laramie County Community College enrollment on an FTE basis, by comparison, rose 11.5 percent.

TABLE 1

	A 3Q01	B 3Q02	C 2Q03	D 3Q03	PERCENTAGE CHANGE A TO D	PERCENTAGE CHANGE B TO D	PERCENTAGE CHANGE C TO D
EMPLOYMENT							
Total Civilian Labor Force	17,878	18,668	19,181	18,452	3.21	-1.16	-3.80
Total Employment	17,544	18,384	18,863	18,130	3.34	-1.38	-3.89
Total Unemployment	334	283	318	323	-3.29	14.13	1.57
Unemployment Rate	1.9%	1.5%	1.6%	1.7%	-10.53	13.33	6.25
Initial Unemployment Claims	9	8	7	8	-11.11	0.00	14.29
Help Wanted Ads	109	57	29	31	-71.56	-45.61	6.90
GENERAL BUSINESS ACTIVITY							
Auto Registrations New & Used	151	150	172	196	29.80	30.67	13.95
Enplanements - Laramie Regional Airport	746	692	640	687	-7.91	-0.72	7.34
Total Taxable Sales (\$000)	106,657	107,404	97,280	123,935	16.20	15.39	27.40
CONSTRUCTION							
Single Fam Bldg Permits - Laramie	19	18	32	34	78.95	88.89	6.25
Total Bldg Permits - (Laramie) (a)	160	169	163	188	17.50	11.24	15.34
Rural Bldg Permits	0	12	19	16	N/A	33.33	-15.79
Value of Authorized Construction (\$000)	3,012	4,852	4,355	7,574	151.46	56.10	73.92
Residential (\$000)	763	774	1,933	1229	61.07	58.79	-36.42
Total Business Construction (\$000)	177	3,074	506	3,297	1762.71	7.25	551.58

(a) Data includes building and non-building.

Note: Each figure reported under Employment and General Business Activity is an average of the figures for the three months. Single Family Building Permits are a total of the figures for three months. Other Construction figures are an average for three months.

TABLE 2

	A 3Q01	B 3Q02	C 2Q03	D 3Q03	PERCENTAGE CHANGE A TO D	PERCENTAGE CHANGE B TO D	PERCENTAGE CHANGE C TO D
FINANCIAL ACTIVITY							
Total Tax Collections (\$000)	6,579	6,635	5,982	7,669	16.57	15.58	28.20
Wholesale & Retail Tax Collections (\$000)	3,537	3,723	3,511	3,898	10.21	4.70	11.02
Actual Receipts to County Entities (\$000) (a)	2,259	2,310	2,091	2,667	18.06	15.45	27.55
Total 1% Sales & Use Tax Distributions (\$000)	1,065	974	973	1,239	16.34	27.21	27.34
Total 3% Lodging Tax Distributions (\$)	104,442	105,218	67,889	139,966	34.01	33.02	106.17

(a) This total includes the 4% Sales and 4% Use Tax, the 1% Sales and 1% Use Tax, the Out of State Use Tax, and the Out of State Sales Tax. As of July 1, 1993, the state sales and use tax levy was changed from 3% to 4%. At the same time the percentage of these revenues distributed to municipalities changed from 35% to 28%.

TABLE 3

	A 3Q01	B 3Q02	C 2Q03	D 3Q03	PERCENTAGE CHANGE A TO D	PERCENTAGE CHANGE B TO D	PERCENTAGE CHANGE C TO D
UTILITIES							
Residential Electric Hookups - Active Meters	11,955	12,128	12,241	12,229	2.29	0.83	-0.10
Commercial Electric Hookups - Active Meters	1934	2071	2,073	2080	7.55	0.43	0.34
Industrial Electric Hookups - Active Meters	26	22	22	22	-15.38	0.00	0.00
Residential Gas Hookups - Active Meters	8,867	9,519	9,562	-100.00	-100.00	-100.00	
Commercial Gas Hookups - Active Meters	918	950	940	-100.00	-100.00	-100.00	
Metered Taps - Water (a)	7,372	7,680	7,789	7,860	6.62	2.34	0.91
EDUCATION							
School Enrollments							
Districts #1 and #2	3,521	3,661	3,659	3,636	3.27	-0.68	-0.63
Private Schools	115	115	116	129	12.17	12.17	11.21
Home School	102	107	106	106	3.92	-0.93	0.00
Avg. Total School Enrollment	3,738	3,883	3,881	3,871	3.56	-0.31	-0.26
University of Wyoming (Headcount) (b)	9,877	9,938	3,255	10,016	1.41	0.78	207.71
University of Wyoming (FTE) (b)	8,962	9,099	1,185	9,135	1.93	0.40	670.89
LCCC - Albany Co. campus (FTE)	331	373	75	416	25.68	11.53	454.67
LCCC - Albany Co. campus (Headcount)	804	846	189	906	12.69	7.09	379.37
Wyoming Technical Institute	973	1,479	1,681	1,464	50.46	-1.01	-12.91

(a) Metered water taps are billed quarterly. Figures reported are total number of taps billed per quarter.

(b) University of Wyoming figures are for the main campus only.

Note: Figures reported are an average for the three months.

N/A indicates the information was not available.

TABLE 4

	JAN	FEB	MAR	APR	MAY	JUN	JUL	AUG	SEP	OCT	NOV	DEC	AVG	YEAR
ALBANY COUNTY														
EMPLOYMENT														
Total Civilian Labor Force	19,081 19,008	19,187 19,422	19,910 19,714	20,059 19,660	19,384 19,009	19,109 18,873	18,726 18,463	18,099 17,894	19,178 19,000	20,156 0	19,989 0	19,218 0	19,341 19,005	2002 2003
Total Employment	18,652 18,597	18,748 18,993	19,469 19,346	19,625 19,320	19,032 18,722	18,736 18,546	18,425 18,141	17,829 17,576	18,899 18,672	19,859 0	19,679 0	18,843 0	18,983 18,657	2002 2003
Total Unemployment	429 411	439 429	441 368	434 340	352 287	373 327	301 322	270 318	279 328	297 0	310 0	375 0	358 348	2002 2003
Unemployment Rate	2.2% 2.2%	2.3% 2.2%	2.2% 1.9%	2.2% 1.7%	1.8% 1.5%	1.9% 1.7%	1.6% 1.7%	1.5% 1.8%	1.5% 1.7%	1.5% 0	1.6% 0	1.9% 0	1.9% 1.8%	2002 2003
Initial Unemployment Claims	16 11	8 8	8 10	13 4	11 7	13 9	6 8	7 6	10 11	14 0	18 0	13 0	11 8	2002 2003
Help Wanted Ads	58 20	56 26	73 30	77 28	75 32	80 28	54 27	66 32	52 34	34 0	30 0	22 0	56 29	2002 2003
GENERAL BUSINESS ACTIVITY														
New Car & Truck Sales	112 113	109 107	114 106	126 147	119 162	129 208	153 187	148 224	150 176	130 0	131 0	118 0	128 159	2002 2003
Enplanements Laramie Regional Airport	671 509	608 545	808 618	723 577	679 632	643 712	701 681	654 674	721 705	719 0	646 0	748 0	693 628	2002 2003
Total Taxable Sales	31,266,000 34,633,100	41,623,800 33,053,800	29,201,600 28,331,000	30,531,800 34,700,000	30,845,500 29,871,000	35,652,800 32,709,200	36,104,300 43,703,300	34,550,600 32,592,800	36,749,400 47,639,100	40,241,900 0	34,607,200 0	40,175,400 0	35,129,192 35,248,144	2002 2003

(\$)

TABLE 5

ALBANY COUNTY	JAN	FEB	MAR	APR	MAY	JUN	JUL	AUG	SEP	OCT	NOV	DEC	AVG	YEAR
CONSTRUCTION														
Total Building Permits - Albany County	98 144	83 77	62 92	112 164	170 127	157 199	170 167	211 225	126 173	230 0	95 0	159 0	139 152	2002 2003
Sing. Fam. Bldg. Perm. - Laramie	2 8	4 4	0 9	12 6	15 16	6 10	6 10	7 6	5 9	8 0	8 0	6 0	7 9	2002 2003
Rural Bldg. Perm. - Albany County	2 6	3 5	8 11	0 12	15 17	10 28	18 17	16 13	2 19	12 0	8 0	2 0	8 14	2002 2003
Value of Authorized Construction	1,445,306 1,779,783	3,592,716 635,468	0,079,219 1,193,982	2,207,283 4,039,336	2,626,026 3,385,785	3,288,788 5,638,786	5,917,108 1,961,365	7,394,945 8,155,275	1,244,558 2,605,114	2,409,043 0	1,435,525 0	1,833,112 0	3,622,794 4,377,210	2002 2003
Business Construction	0 0	2,096,931 0	570,000 0	0 0	208,580 0	1,517,229 0	3,961,502 350,580	5,222,857 9,110,092	38,000 432,102	277,881 0	0 0	0 0	1,031,313 1,267,778	2002 2003
Residential Construction	248,000 899,508	373,375 299,343	0 766,216	1,416,011 967,944	1,471,621 2,521,157	898,300 2,310,081	1,017,421 1,185,292	836,391 1,298,636	469,452 1,202,942	1,251,947 0	848,957 0	872,210 0	808,640 1,272,347	2002 2003
UTILITIES														
Power Sales	1,908	1,911	1,913	1,919	2,167	2,064	2,062	2,080	2,072	2,075	2,080	2,080	2,028	2002
Commercial Active Meters	2,066	2,063	2,061	2,064	2,064	2,091	2,086	2,079	2,075	0	0	0	2,072	2003
Gas Consumption	9,421	9,421	9,421	9,567	9,567	9,567	9,519	9,519	9,519	9,482	9,482	9,482	9,497	2002
Residential Active Meters	9,520	9,520	9,520	9,562	9,562	9,562	0	0	0	0	0	0	6,361	2003
TAXES														
Total Sales and Use Tax Collections	1,915,004 2,123,462	2,542,898 2,022,392	1,788,392 1,744,627	1,877,264 2,128,790	1,894,151 1,842,789	2,185,398 2,010,160	2,222,753 2,690,556	2,131,624 2,030,609	2,280,307 2,948,080	2,487,991 0	2,135,730 0	2,405,778 0	2,155,608 2,171,274	2002 2003
Wholesale and Retail Sales and Use Tax Collections	1,163,594 1,235,092	1,463,936 1,246,878	1,051,484 1,021,120	1,009,382 1,092,727	893,222 1,070,405	1,349,578 1,347,865	1,219,849 1,088,175	1,230,364 1,047,609	1,271,891 1,762,012	1,426,261 0	1,132,894 0	1,463,197 0	1,223,021 1,212,431	2002 2003
1% Sales and Use Tax Receipts	312,660 346,331	416,238 330,538	292,016 283,310	305,318 347,000	308,455 298,790	356,528 327,092	361,043 437,033	345,506 325,928	267,494 476,391	402,419 0	346,072 0	401,754 0	342,959 352,490	2002 2003
3% Lodging Tax Receipts	15,602 13,763	17,184 10,183	13,239 19,032	21,085 19,434	22,940 25,301	20,612 23,154	28,124 35,018	32,241 49,100	44,853 55,848	40,429 0	29,309 0	26,148 0	25,980 27,870	2002 2003

LARAMIE/ALBANY COUNTY PROFILE 2002

City Population (2000 Census) 27,204
 County Population (2000 Census) 32,014

Employment Percentage by Industry

Farming	2.0	FIRE	7.8
Mining	0.2	Services	26.9
Construction	5.3	Gov't	31.7
Manuf.	3.9	Retail Trade	18.1
Trans & Util	1.8	Wholesale	1.1

Taxes

No State Income Tax (personal or corporate); No inventory tax; 4% State Sales Tax; 1% Local Sales Tax; Gasoline Tax \$0.05/gallon; Property Tax - 119.88 mills on 9.5% of residential market value.

Law Enforcement

Area Crime Rate (12/31/01) per 10,000

	U.S. (2001)	Alb. Co. (2001)		U.S. (2001)	Alb. Co. (2001)
Robberies	14.9	0	Homicides	0.6	0
Rapes	3.2	2.2	Assaults	31.9	35
Burglaries	74.1	55.9	Car Thefts	43.1	17.8

Education

Average daily teacher/pupil ratio 13.91
 Expenditure/student \$7,138
 Average ACT 2000 Score 21.1

Income

Per Capita -2000 BEA \$23,772
 Median Household Income (1999) \$28,790
 Wyo. Median Household Income (1999) \$37,892

Demographics

Households - County (2000) 13,269
 Households - City (2000) 11,336
 Median Age - County (2000) 26.7

Employed Workforce Characteristics

Employment (2002) 18,996
 Unemployment Rate 1.8%

Average Weekly Wages (2002)

Agriculture	\$416	Retail Trade	\$328
Mining	\$694	Finance & Insurance ...	\$612
Construction	\$535	Services	\$321
Manufacturing	\$508	Local Government	\$545
TCPU	\$551	State Government	\$684
Wholesale Trade	\$595	Federal Government ...	\$763
Real Estate	\$267	Healthcare	\$655
Information	\$245		

Inflation

U.S. CPI (2002) 1.6%

Race (2000)

White	29,235	Native American	305
Hispanic	1,575	Asian	545
Black	354	Total	32,014

Population Profile

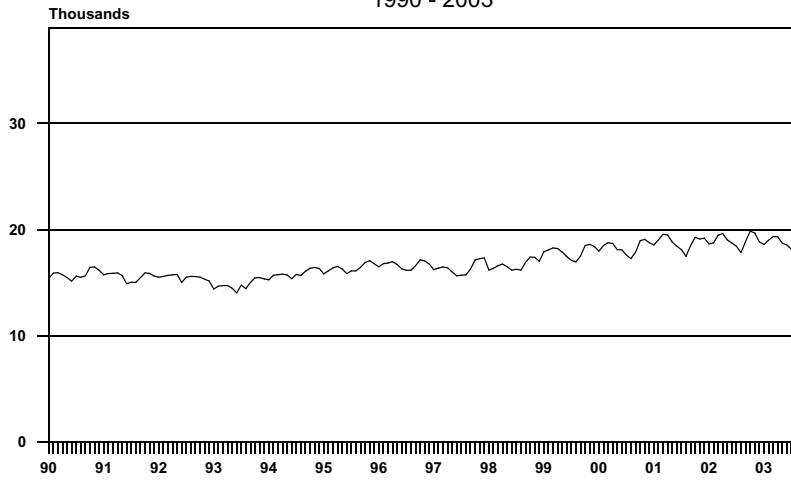
Total Population 32,014

Age Distribution

Less than 5	1,630	45 - 49 years	2,140
5 - 9 years	1,575	50 - 54 years	1,805
10 - 14 years	1,614	55 - 59 years	1,218
15 - 19 years	3,634	60 - 64 years	948
20 - 24 years	6,463	65 - 69 years	759
25 - 29 years	2,753	70 - 74 years	647
30 - 34 years	1,840	75 - 79 years	555
35 - 39 years	1,746	80 - 84 years	389
40 - 44 years	2,002	85 and over	296

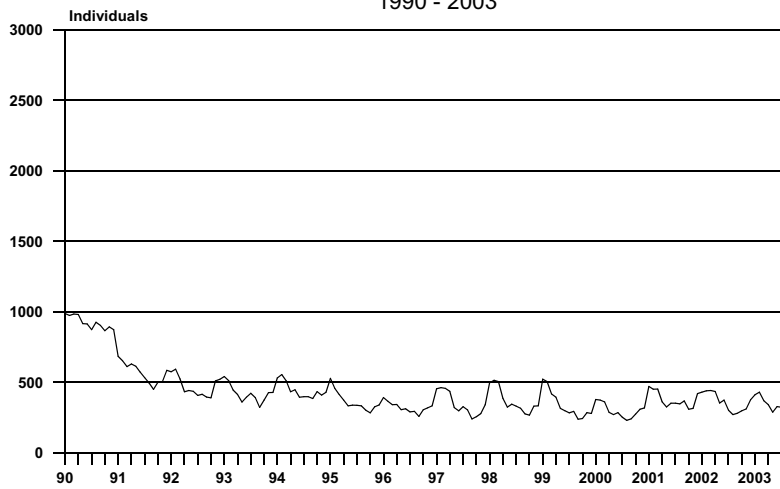
EMPLOYMENT, ALBANY COUNTY

MONTHLY TOTALS
1990 - 2003



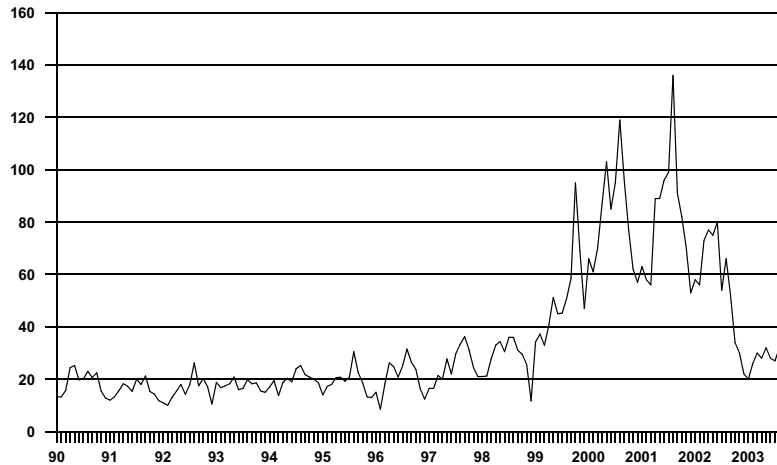
UNEMPLOYMENT, ALBANY COUNTY

MONTHLY TOTALS
1990 - 2003



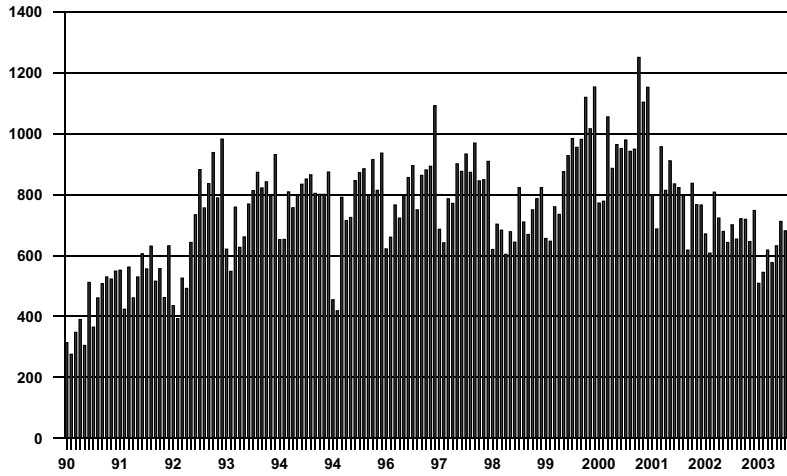
HELP - WANTED ADS, LARAMIE

MONTHLY TOTALS
1990 - 2003



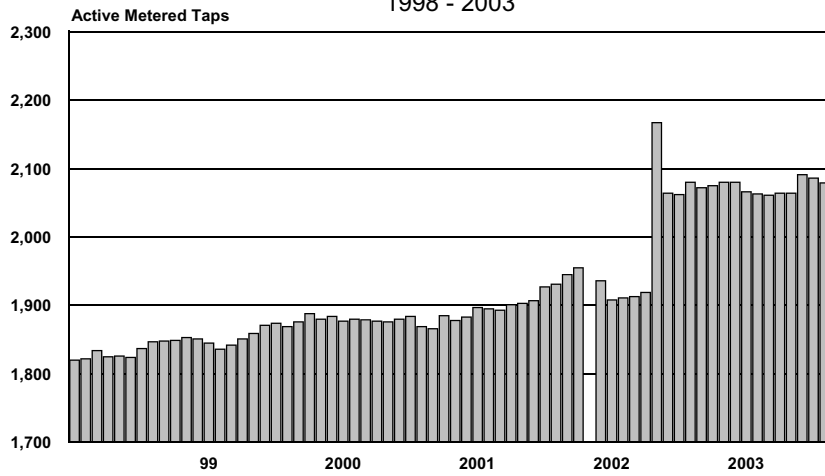
ENPLANEMENTS, LARAMIE REGIONAL AIRPORT

MONTHLY TOTALS
1990 - 2003



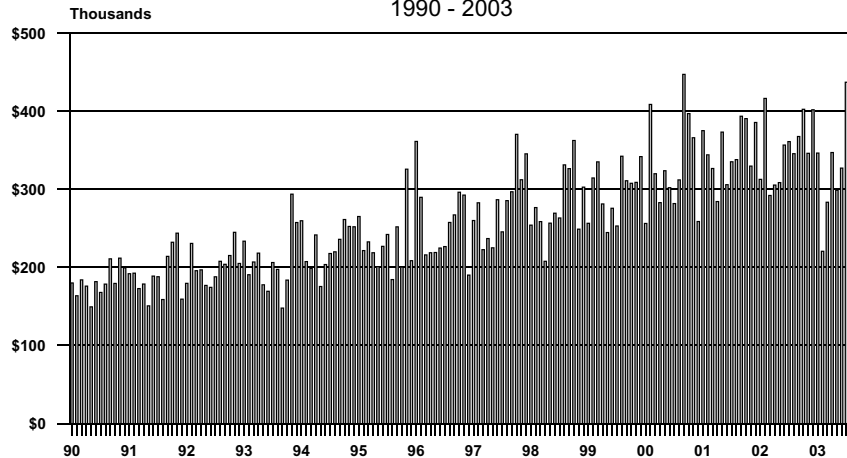
COMMERCIAL ELECTRIC POWER, LARAMIE

MONTHLY TOTALS
1998 - 2003



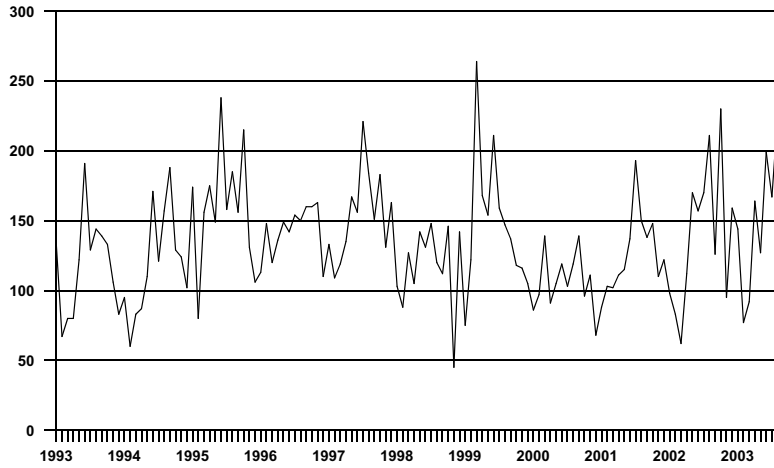
1% OPTIONAL SALES AND USE TAX DISTRIBUTIONS ALBANY COUNTY

MONTHLY TOTALS
1990 - 2003



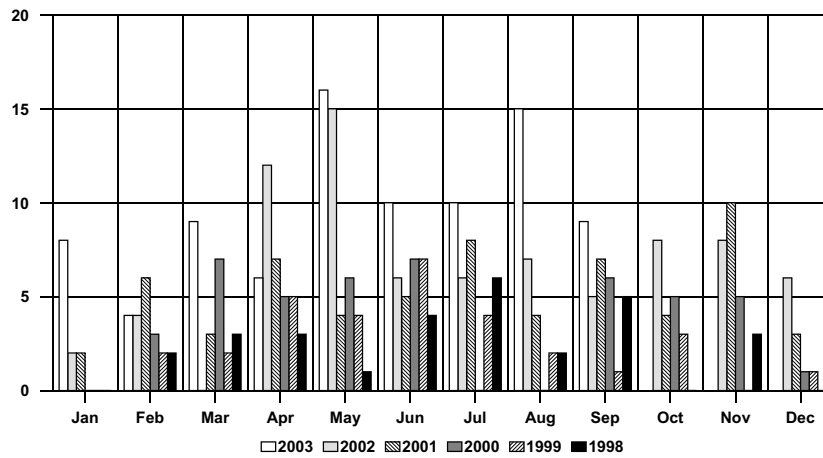
TOTAL BUILDING PERMITS, LARAMIE

MONTHLY TOTALS
1993 - 2003



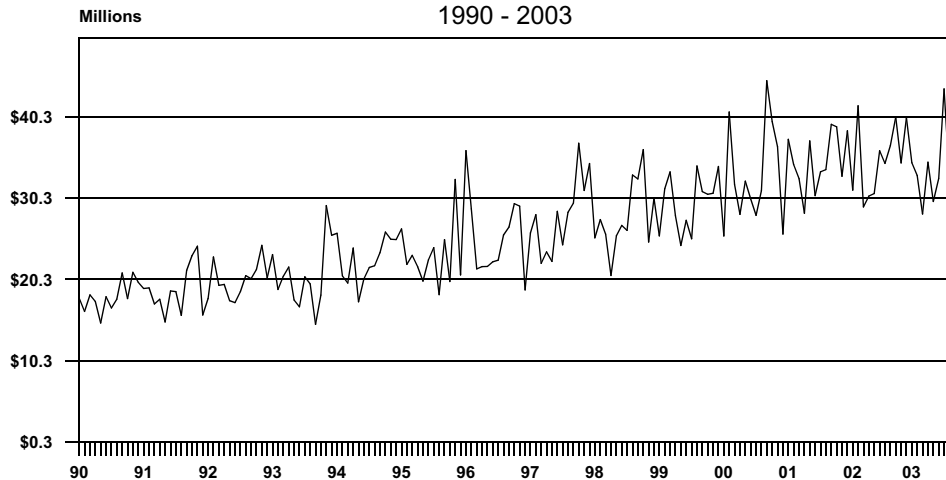
SINGLE-FAMILY BUILDING PERMITS, LARAMIE

MONTHLY TOTALS
1998 - 2003



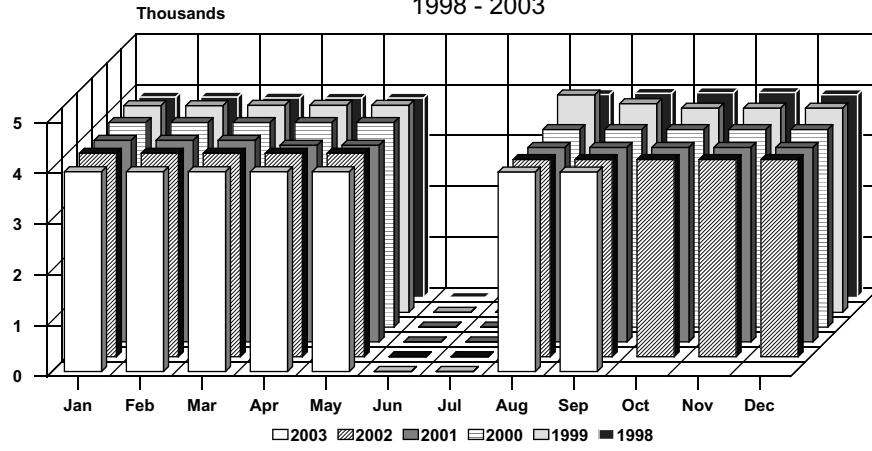
TOTAL TAXABLE SALES, ALBANY COUNTY

MONTHLY TOTALS
1990 - 2003



TOTAL ENROLLMENT, ALBANY COUNTY SCHOOLS
City of Laramie and Albany County

MONTHLY TOTALS
 1998 - 2003



DATA SOURCES

1. Automobile Registrations:
Albany County Clerk
 2. Construction, Permits, Valuation, Residential:
Laramie City Engineering Department
 3. Employment:
Wyoming Department of Employment
 4. Help-Wanted Index:
Center for Economic and Business Data
Laramie County Community College
 5. Sales and Use Tax Collections:
Wyoming Department of Revenue and Taxation
Department of Administration & Information
 6. Utilities:
Electrical - Pacific Power
Natural Gas - KN Energy
 7. Water Usage - Metered Taps:
Laramie City Building Department
 8. Enplanements:
Laramie Regional Airport
 9. Educational Data:
Albany County School District #1
St. Laurence Private School
University Of Wyoming
Laramie County Community College
 10. Rural Building Permits:
Albany County Planning Office
-

SPONSORS

We wish to acknowledge financial support from the following:

City of Laramie
Laramie Economic Development Corporation
Laramie Area Chamber of Commerce
1st Interstate Bank of Laramie